

New Banksia Mental Health Unit

Following the completion of Master Planning in 2020, the project team commenced designing the new Banksia Mental Health Unit earlier this year.

Carers and consumers with lived experience of mental illness have participated in the co-design process, alongside members of staff.

In April 2021, the Concept Design was presented to the Co-Design Team, which included Aboriginal and non-Aboriginal staff, carers and consumers. The designs were then taken on a regional roadshow and are now on display in the Banksia Unit.

The Concept Design lays out the site plan for the new mental health unit. It contains 33 beds, various

clinical and support areas, as well as common areas including activity and recreation spaces, an exercise room, and multiple courtyards. The design aims to create a therapeutic environment and support contemporary models of care. The new unit will be physically connected to Tamworth Hospital via a linkway.

What's next?

The project team will review the key themes from feedback received from the co-design team, staff and community and incorporate into the next design stage, known as the Schematic Design. The final design stage, known as Detailed Design, is expected to be completed by the end of the year.



Catching up with community members at the Tamworth shopping centre pop-up during April

Banksia designs taken on the road

During April, the project team visited the communities of Tenterfield, Glen Innes, Inverell, Moree, Narrabri, Armidale and Tamworth showcasing the Concept Design for the new Banksia Unit.

The feedback received has been incredibly valuable with many consumers and carers coming to speak with the project team reps at each of the pop-ups.

A pop-up was also held in the main entrance of the Tamworth Hospital, with many Acute Services Building (ASB) staff viewing the designs and providing really useful feedback.

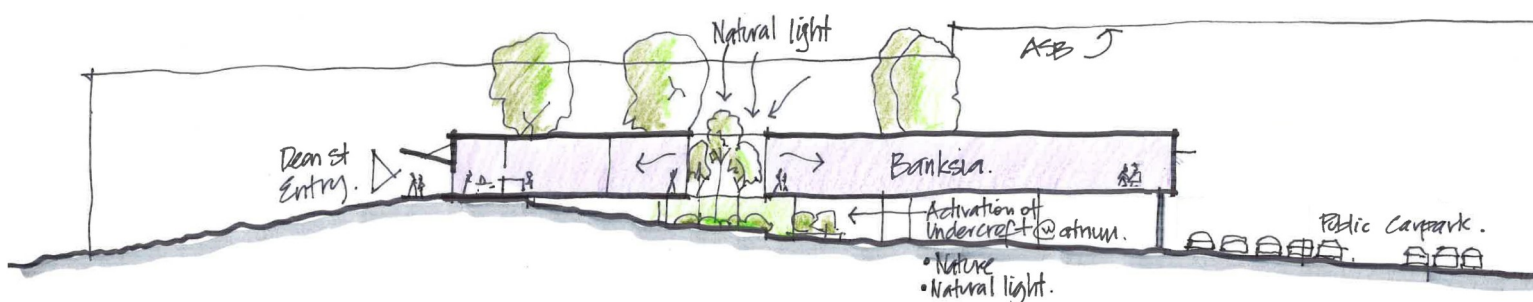
At the same time, an online survey was made available to provide people with another option to give feedback. Staff, consumers, carers and support services featured prominently in the survey and provided feedback from the lived experience of mental illness.

The top choices for the new unit's design included the incorporation of natural light and plants/foliage, dedicated visitor/family spaces, outdoor spaces to create a calming environment, and a staff station space that supports communication.

The project team are incredibly grateful to everyone who came to have a chat at the pop-ups and those that completed the survey.

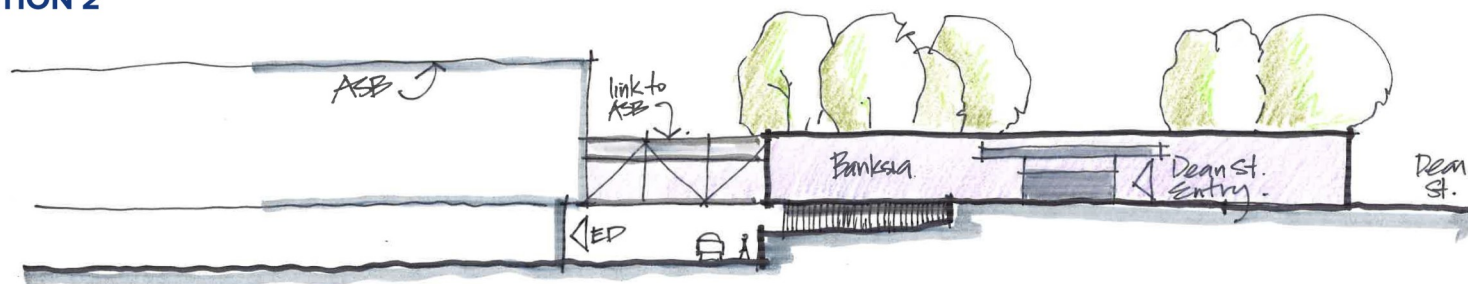
The key themes from the feedback will be provided to the Architects working on the project for incorporation into the next stage of the design process.

SECTION 1



Above and below: Cross-sectional views of the new Banksia Mental Health Unit

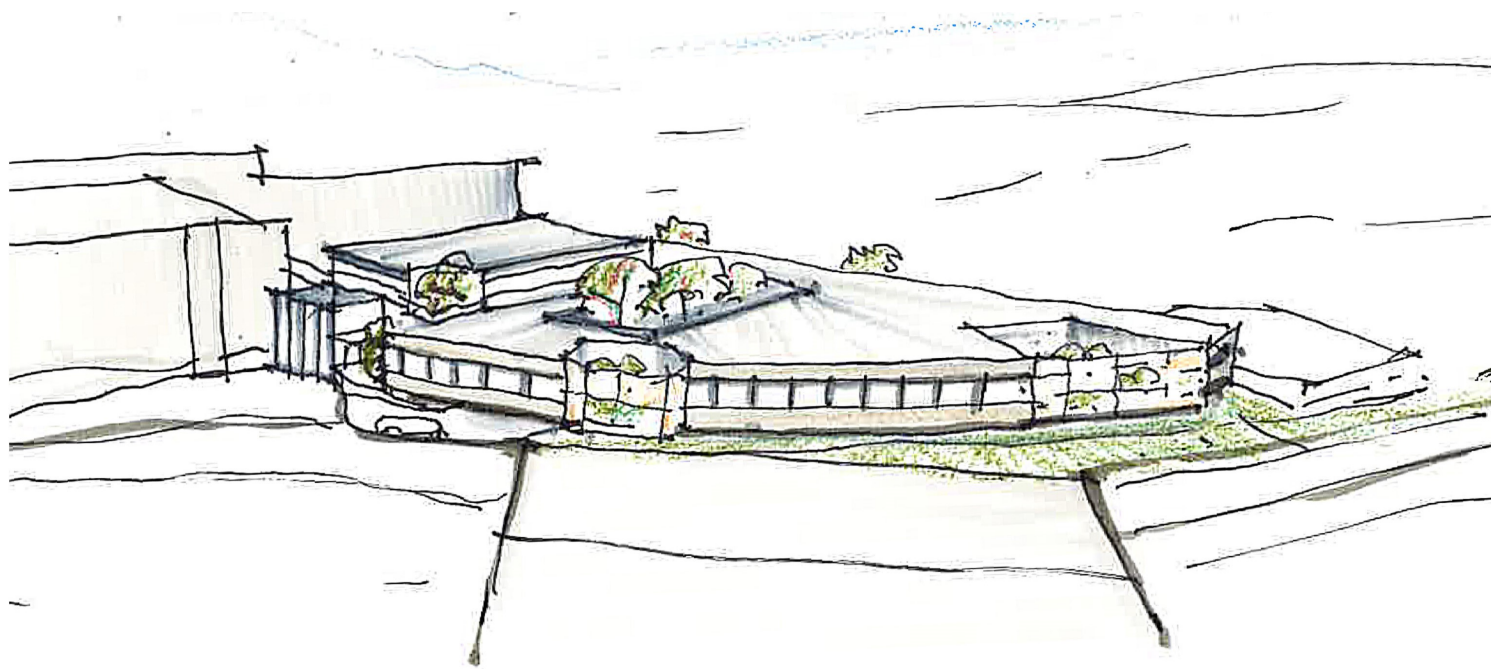
SECTION 2



Statewide Mental Health Infrastructure Program



Community Update 1 - May 2021



Above: North East aerial view of the new Banksia Mental Health Unit

Below: The proposed floorplan for the new unit



KEY:

- Reception
- Common areas
- Bedrooms
- Courtyards
- Clinical areas
- Assessment/meeting rooms
- Walkways
- Lift

For more information visit: <https://bit.ly/3wKIGnt>
Or contact HI-Banksia@health.nsw.gov.au

Consultation continues

The project team will be continuing to consult throughout the design phase for the project. This will occur through the Co-Design team, targeted Project User Groups as well as continued consultation within Tamworth and the New England North West region.

We will continue to provide updates to the community as the project progresses.

Want more information now?

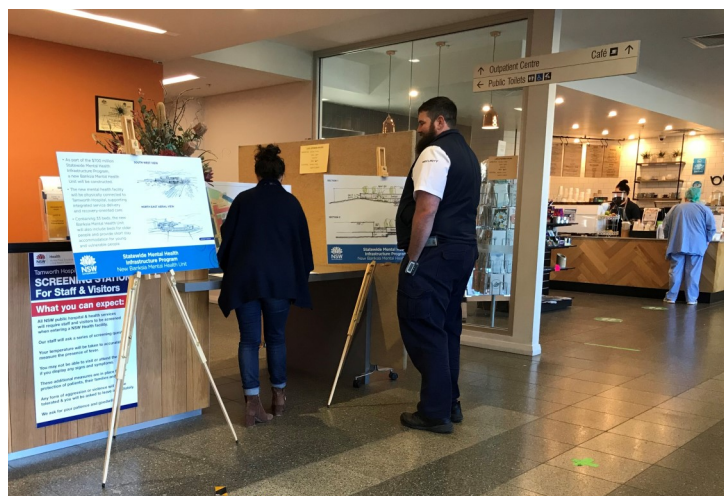
For more information on the project please visit Health Infrastructure's website at:

<https://bit.ly/3wKIGnt>

The Banksia webpage includes Frequently Asked Questions as well as the preliminary design images.

Or you can email the project team directly at:

HI-BanksiaUnit@health.nsw.gov.au



Above: Pop-up at the Tamworth Hospital during April

New Banksia Mental Health Unit timeline

