

New Banksia Mental Health Unit

The design for the new Banksia Mental Health Unit is progressing well, and we thought it was a good time to check-in with the community. This newsletter provides an update on the design process and also how the project team has incorporated feedback into the design.

In the last week of October, the project team completed another regional roadshow taking the updated designs out on the road. We held “pop-ups” and meetings in the Armidale, Inverell, Moree and Tamworth communities.

The feedback received will help guide the team as they work through the finer details of the design such as the exterior and interior colours, outdoor spaces, and the furnishings for the bedrooms and indoor spaces.

What's next?

We still have more work to do during the next and final design stage known as Detailed Design. The design is expected to be completed by early next year, with construction forecast to commence in mid-2022.



Above: An artist impression of the new unit's entry and its connection to Tamworth Hospital on the left.

Design feedback

As we complete the Schematic Design for the new unit, we're taking a moment to pause and reflect on what we have achieved to date.

As of September 2021, we have logged 381 comments on the design received from Co-Design meetings, consultations and working groups.

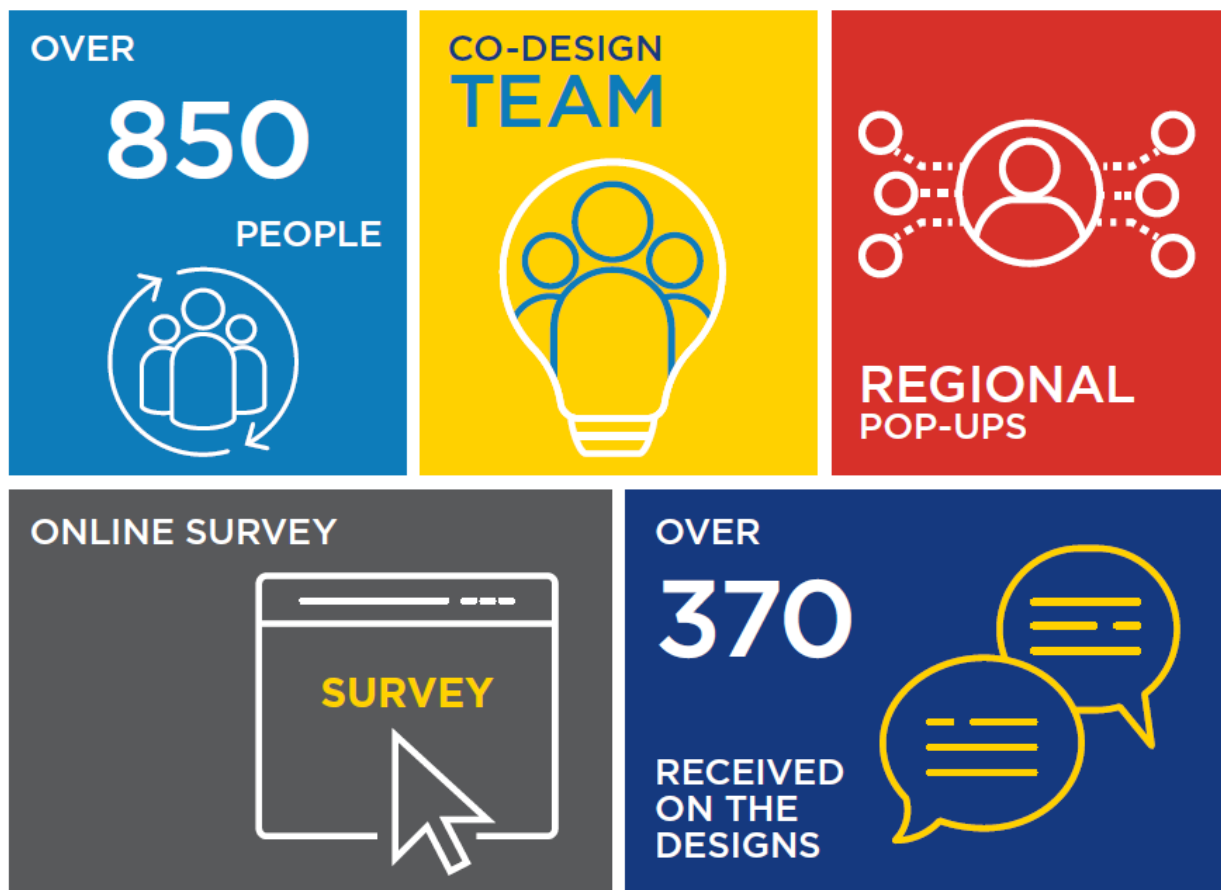
Of these, 72 have been incorporated into the design during the Concept Design and Schematic Design stages. An additional 71 comments were providing information or confirmation on the design.

Of the remaining comments received, 44 relate to the operations of the new unit, while 181 relate to the Detailed Design and have been flagged for review during this next stage in the design process.

To read more about this please see our "Consultation Update" available here: <https://bit.ly/3EFIJ7Q>

This details the consultation to date and provides examples of where feedback has been incorporated into the design.

The project team thanks everyone for sharing your time and expertise with us.



Statewide Mental Health Infrastructure Program



Community Newsletter 3 - November 2021



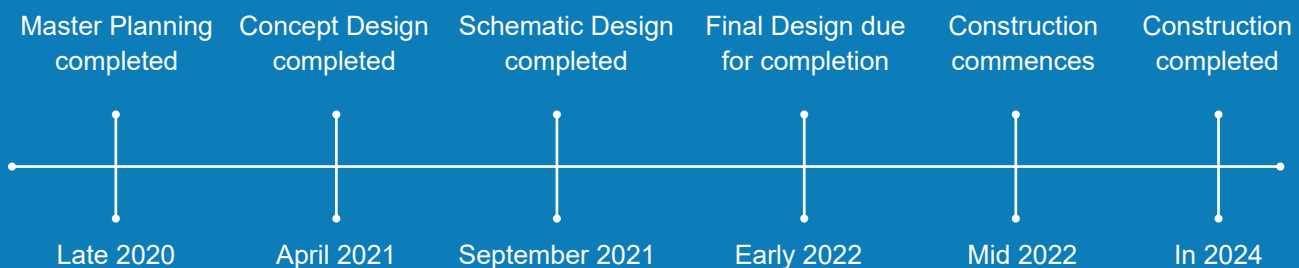
Want more information?

For more information on the project please visit Health Infrastructure's website at: <https://bit.ly/3wKIGnt>

The Banksia webpage includes previous newsletters, Frequently Asked Questions as well as some of the design images.

Or you can email the project team directly at: HI-Banksia@health.nsw.gov.au

New Banksia Mental Health Unit timeline



For more information visit: <https://bit.ly/3wKIGnt>
Or contact HI-Banksia@health.nsw.gov.au